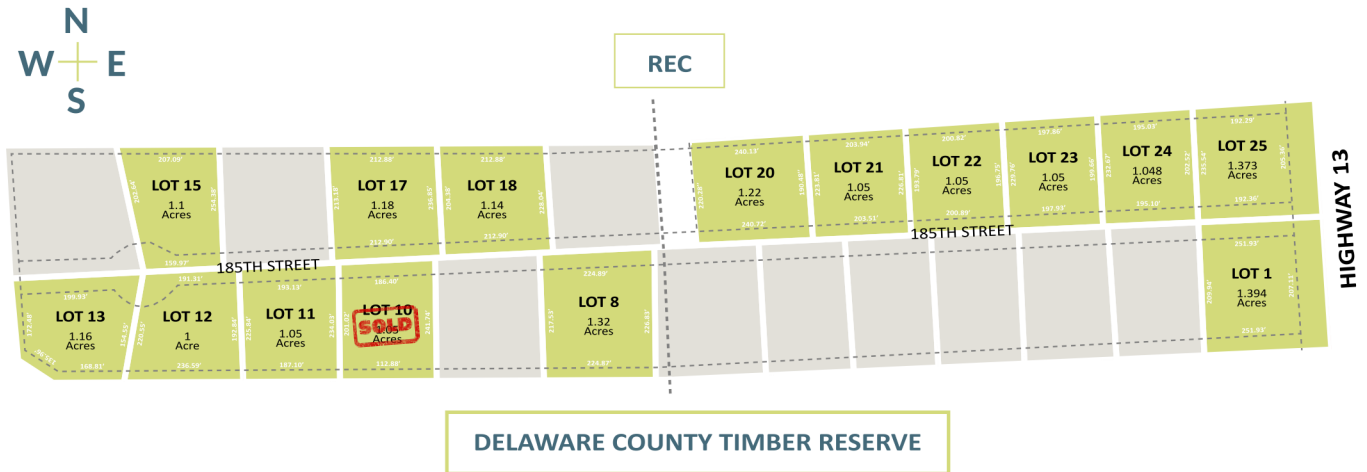


# FAWN TRAIL

## SUBDIVISION



Convenient location 1 mile north of Manchester right off of Highway 13 with a private culdesac drive and quiet living. Flat lots approximately 1+ acre in size with daylight basement potential and just north of a county timber reserve. This development offers great views and abundant wildlife.

- Utilities stubbed to Lot Line
- Electrical: Alliant Energy and MVREC
- Natural Gas: Black Hills Energy or LP
- Shared Well
- Private Septic System
- Covenants

LOTS STARTING AT \$42,000+