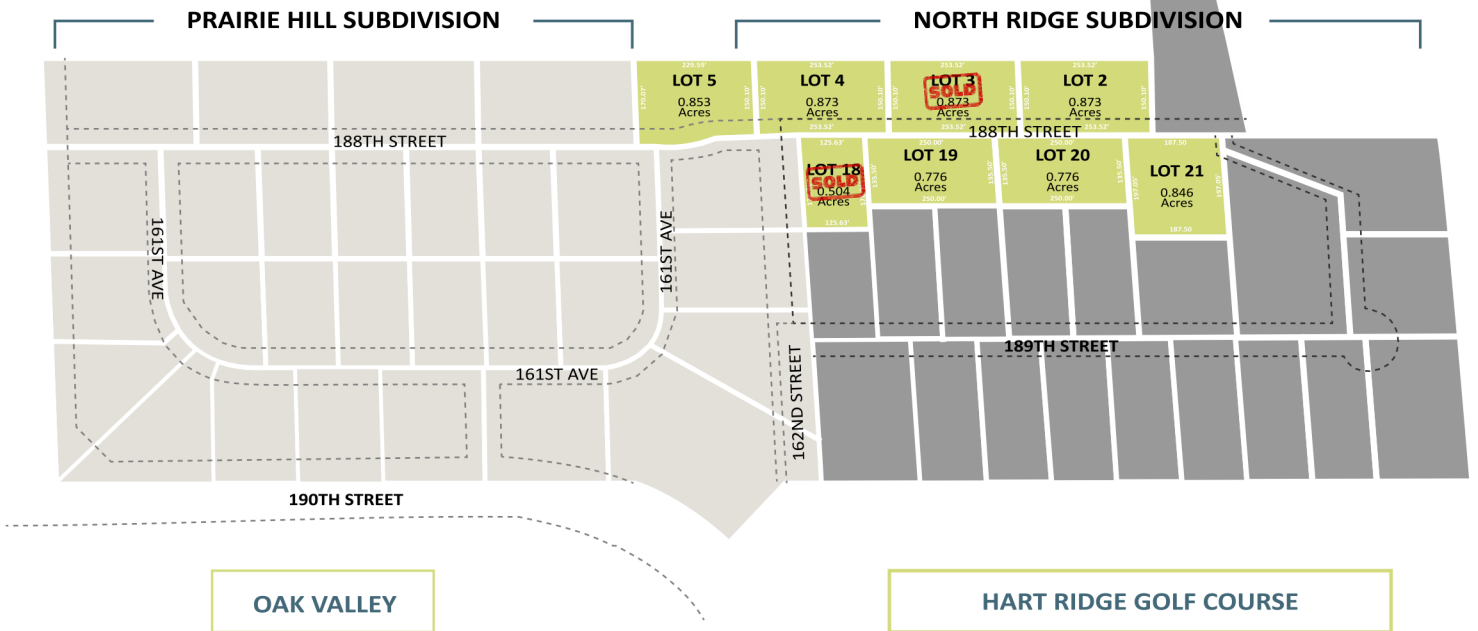


# North Ridge

## SUBDIVISION



Convenient location 1.5 miles northwest of Manchester, private drive and great proximity to Hart Ridge Golf Course. Flat lots just shy of 1 acre in size with daylight basement potential and offers country living close to town.

- Utilities stubbed to Lot Line
- Electrical: MVREC
- Private Septic System
- Shared well
- Covenants

LOTS STARTING AT \$42,000+