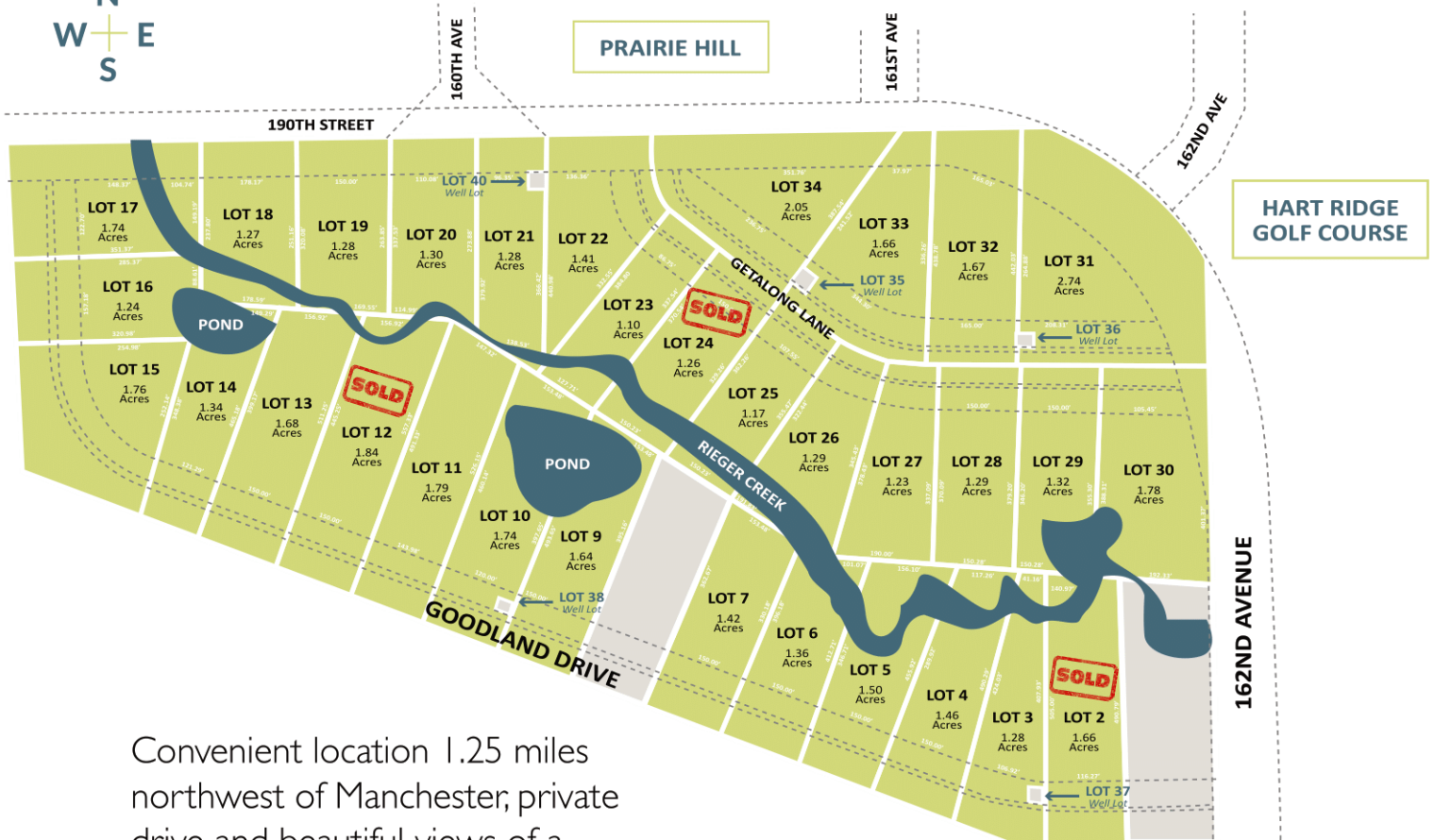


# OAK VALLEY

## SUBDIVISION



Convenient location 1.25 miles northwest of Manchester, private drive and beautiful views of a small creek flowing through with an abundance of wildlife. Flat lots approximately 1.25 - 1.5 acres in size with daylight and/or walkout basement potential. Sizable lots and a short golf cart ride to Hart Ridge Golf Course.

- Utilities stubbed to Lot Line
- Electrical: MVREC
- Private Septic System
- Shared Well
- Covenants

LOTS STARTING AT \$50,000+